



**FALKEID  
SHIPPING**

MODERNE, KUNDEORIENTERTE OG EFFEKTIVE TRANSPORTLØSNINGER

FALKEID - VI HOLDER DET VI LOVER + LITT TIL



## FALKFJORD

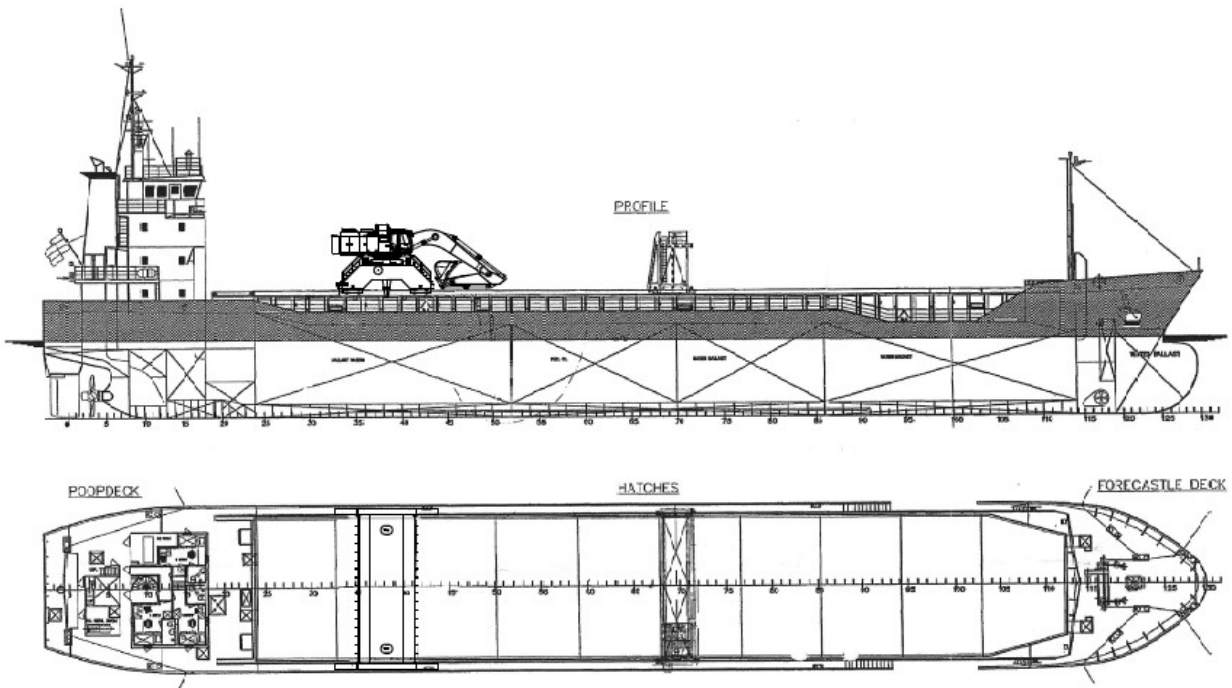
NAME OF SHIP	MV FALKFJORD
CALL SIGNAL	LANB5
PORT OF REG.FLAG	STAVANGER
TYPE OF VESSEL	DRY CARGO SHIP
BUILT	NETHERLANDS, 1998
OWNER	FALKEID SHIPPING AS NO-4160 FINNØY
OFFICIAL NUMBER	9141364
IMO NUMBER	9141364
CLASS & NUMBER	DNV-GL100A5E1 GENERAL DRY-CARGO VESSEL DBC DG STRENGTHENED (IB) MC E1 AUT
LENGTH OVERALL	89.68 m
LENGTH B.P.	84.99 m
BEAM EXTREME	13.17 m
DRAUGHT SUMMER	6.22 m
MOULDED DEPTH	7.15 m
DEADWEIGHT	4618 mt
LIGHT SHIP	1391.17 mt
GROSS TONNAGE	2834 mt
MAIN ENGINE	DEUTZ TBD 645 L 2200kW 600 rpm
PROPELLER	CONTROLLABLE PITCH PROPELLER
BOW THRUSTER	260 Kw / 348 hp
RUDDER TYPE	BECKER

TOTAL BALLAST	1627 m <sup>3</sup>
TOTAL FRESH WATER	41 m <sup>3</sup>
TOTAL MAR. DIESEL OIL	209 m <sup>3</sup>
TOTAL LUB.OIL	15.4 m <sup>3</sup>

HOLD/Type/Size of hatch cover BOXSHAPED-TYPE / 62.35 m + 11.00

HOLD DIMENSION / L+B+H	62.35 m + 11.00 m + 8.44 m
HOLD CAPACITY Grain / Bales	201929 ft <sup>3</sup> / 5718 m <sup>3</sup>
MAX.LOAD ON DECK / H. COVER	18 t/m <sup>2</sup> / 1.6 t/m <sup>2</sup>
LENGTH OF ANCHOR CHAIN	PORT/STBD 8 SHACKLES + 27.1 m each

Contact details:  
 Mobile: +47 483 85 776  
 Email: falkford@falkeid.no



All details are without guarantee